

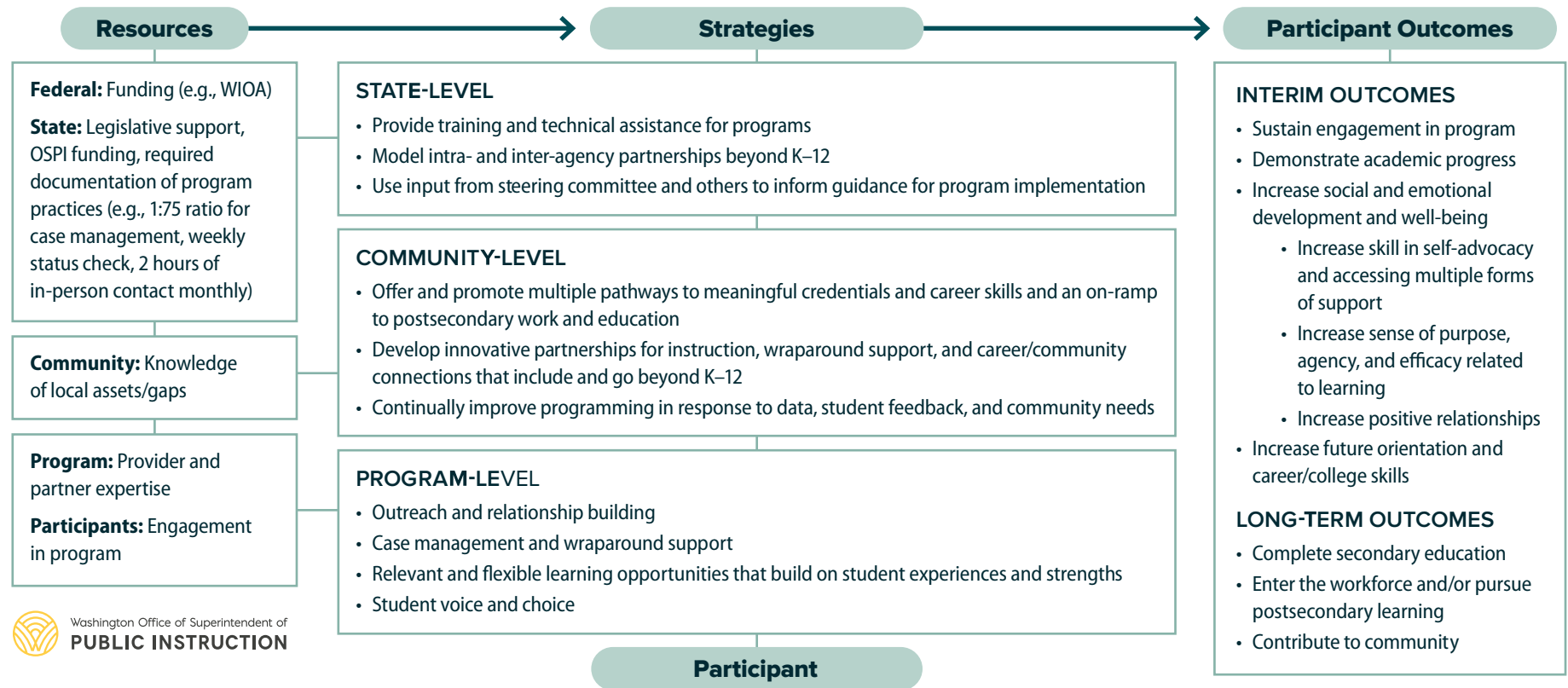
Open Doors Statewide Youth Reengagement System Theory of Action | September 2022

Focus Population

Open Doors is an option for young people 16-21 who are not enrolled in high school, who are not on track to complete by 21, and/or who may not complete high school with their cohort without intensive supports.¹

Assumptions

- Youth experience disruptions in their high school education for multiple, complex reasons
- Alternative learning, credit recovery, and online learning programs do not provide sufficient support for all students
- Through cross-agency partnerships, youth reengagement programs can offer intensive and varied supports in response to the personal challenges and goals of each student



¹ <https://app.leg.wa.gov/WAC/default.aspx?cite=392-700-035&pdf=true>

Foundational Principles



Student-based programming, services, and supports to fit individual goals, needs, and strengths



Whole-person support to address barriers to learning and promote overall well-being

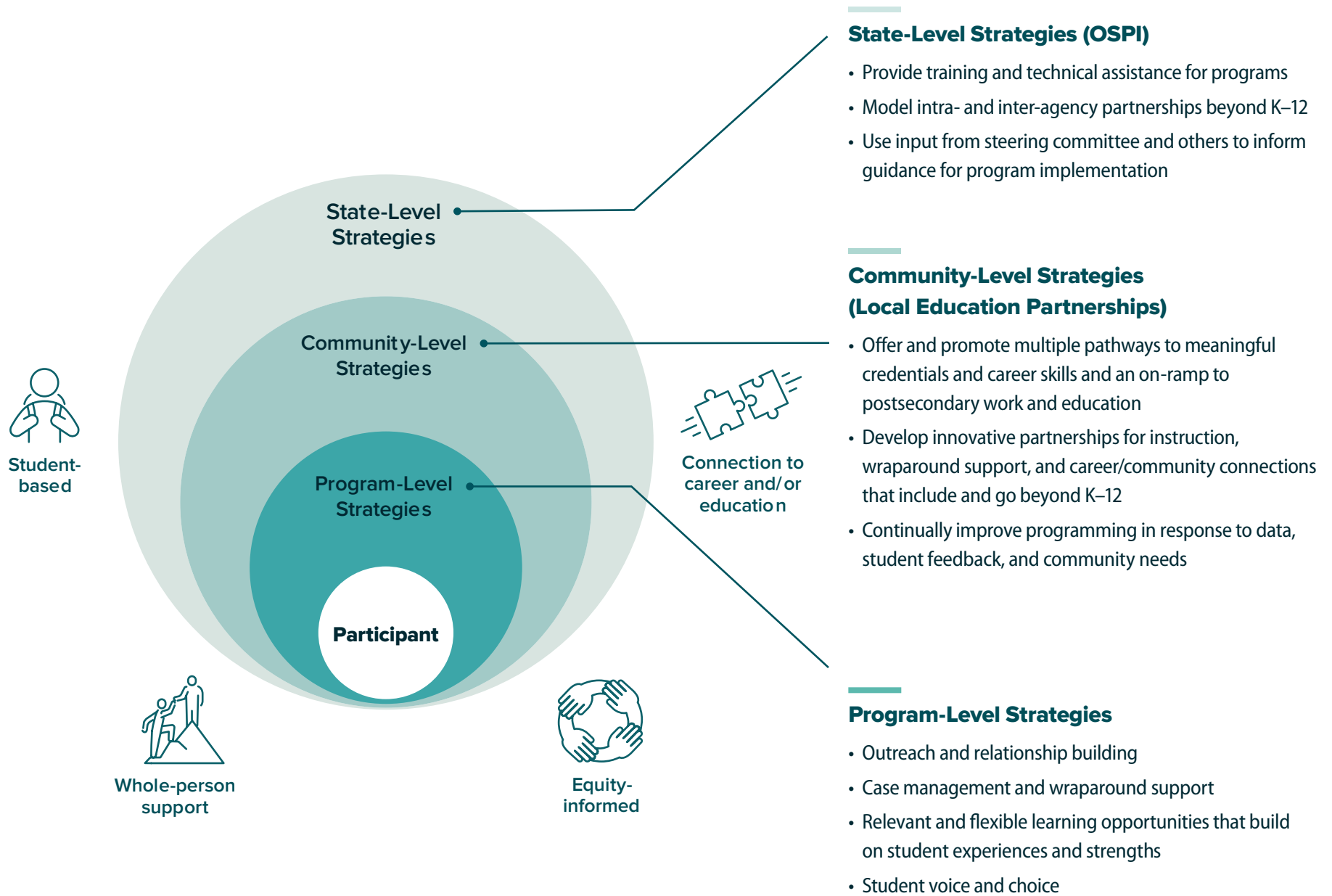


Connections to career and/or postsecondary education to help students take their next step



Equity-informed design and implementation to address disparities and support students furthest from educational justice

Open Doors Statewide Youth Reengagement System

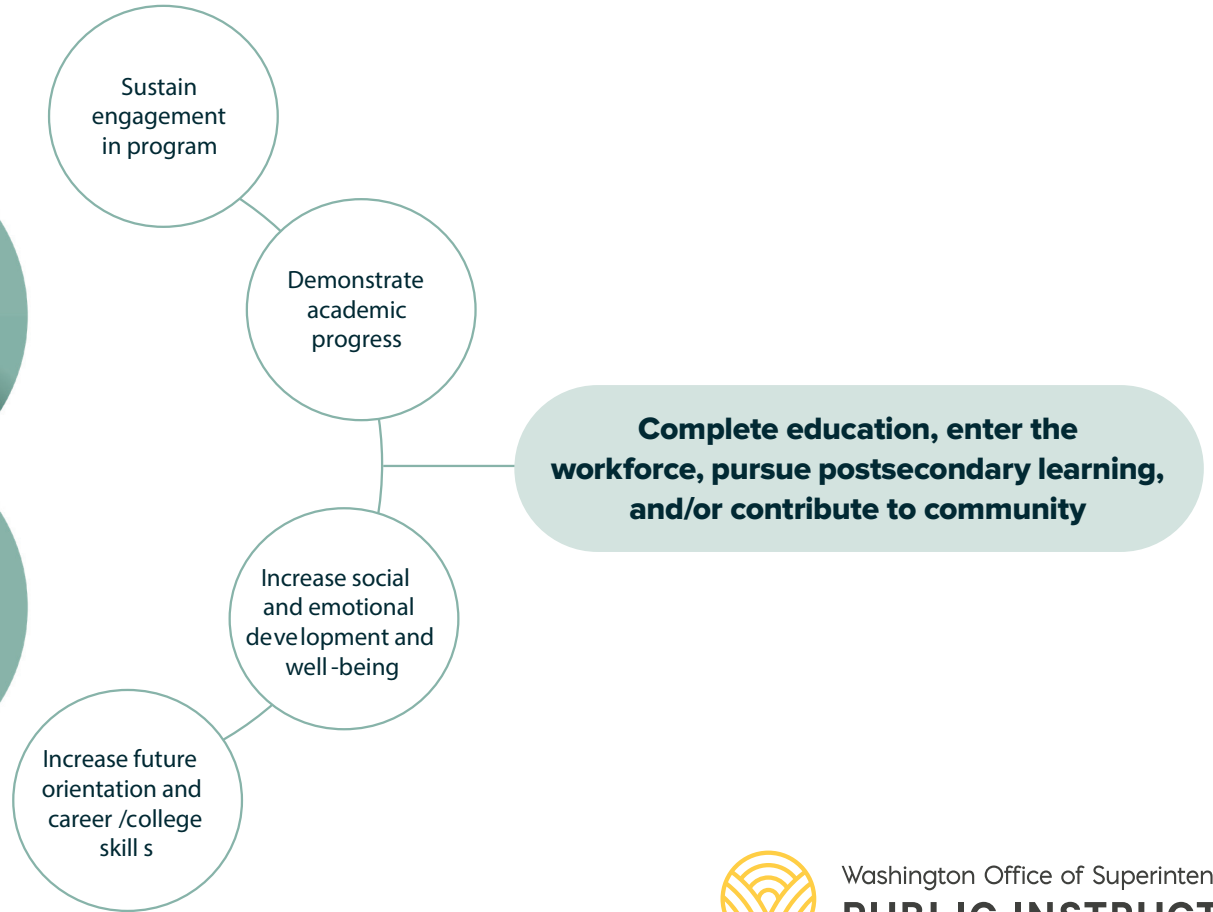


Open Doors Program Strategies and Participant Outcomes

Program Strategies



Participant Outcomes



Washington Office of Superintendent of
PUBLIC INSTRUCTION

Foundational Principles



Student-based programming, services, and supports to fit individual goals, needs, and strengths



Whole-person support to address barriers to learning and promote overall well-being



Connections to career and/or postsecondary education to help students take their next step



Equity-informed design and implementation to address disparities and support students furthest from educational justice

Examples of Open Doors Program Strategies and Practices

